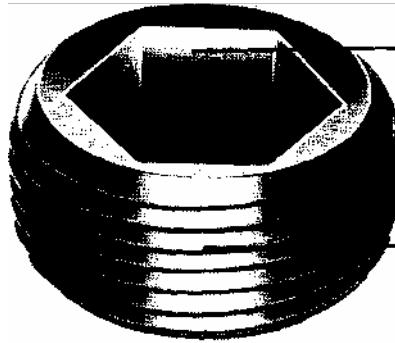


Pressure Plugs

When it comes to Pressure Plugs, insist on "UNILOK"

Here's why :

"UNILOK" Pressure Plugs have precision hex sockets with radius in the socket corners to eliminate stress concentrations. Deeper socket are provided for higher tightening torque. The fully formed taper threads achieve positive seal in tapped holes without need for sealing compounds.



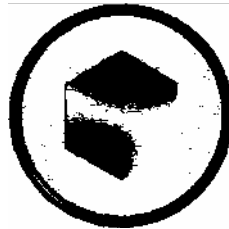
Feature for feature the superior Pressure Plug

- Precision hex socket with maximum depth for positive wrenching at higher seating torques.
- Taper thread form to achieve a positive seal without need for sealing compounds.
- Continuous grain flow makes the plug stronger.
- Roundness closely controlled for perfect seal.
- Uniform taper of 1 : 16.



high pressure seal -

Achieved through metal-to metal contact at the large end of the plug. High load placed on the few mating threads near the top of the hole. Sealing action retained even after repeated use.



roundness - closely controlled for perfect seal.



fully formed taper threads - achieve positive seal in tapped holes without need for sealing compound.

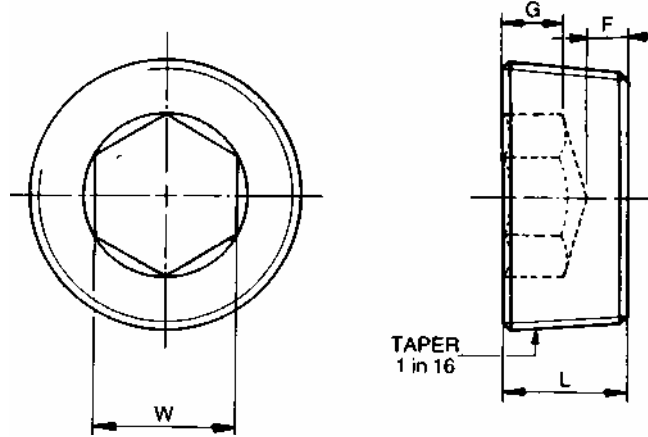
When you use "UNILOK" Pressure Plugs, you get the following advantages :

- No leakage upto 3.5 kg/mm² (5,000psi).
- Seal without tape or compound to enter and foul the system.
- Reusable without seizing.
- Seal fully against low viscosity liquids.
- Require minimum seating torques.
- Need minimum re-tooling or special tools.

Pressure Plugs

Metric & Inch (NPTF) Series

Dimensions - Physical Properties - Lengths



Metric Threads

Plug Size	M18	M20	M24	M30
Pitch	1.5	1.5	1.5	1.5
LNom.	10.0	10.0	12.0	12.0
GMin.	5.0	5.0	6.0	6.0
FMin.	2.0	2.0	2.0	2.0
WNom.	8.0	10.0	12.0	17.0

Notes :

1. The pressure plugs will generally conform to DIN:906, IS:9645. 2 Threads will conform to Metric external taper threads of short type of IS:8788, DIN:158.
 3. Material : "UNILOK" High Grade Steel.
 4. Physical Properties: Property Class 5.8 as per DIN ISO 898, Part 1.
 - 5 The plugs will suit to internal parallel threads as per IS:8788, DIN 13 Part 12. 6.
- All dimensions are in millimeters.

NPTF Threads - DRYSEAL TYPE

Plug Size	1/4	3/8	1/2	3/4	1
Pitch	18	18	14	14	11.5
LMax.	0.475	0.475	0.630	0.640	0.790
GMin.	0.190	0.190	0.250	0.310	0.380
FMin.	0.060	0.060	0.090	0.090	0.120
W Norm.	1/4	5/16	3/8	9/16	5/8

Notes :

1. The pressure plugs will generally conform to SAE J531.
2. Threads will conform to Dryseal American Standard Taper Threads as per SAE J476 (ANSI B 2.2).
3. Material : "UNILOK" High Grade Steel.
4. Physical Properties : As per SAE Gr. 5.
5. Heat Treatment : HRc 24-32.
5. All dimensions are in inches.